

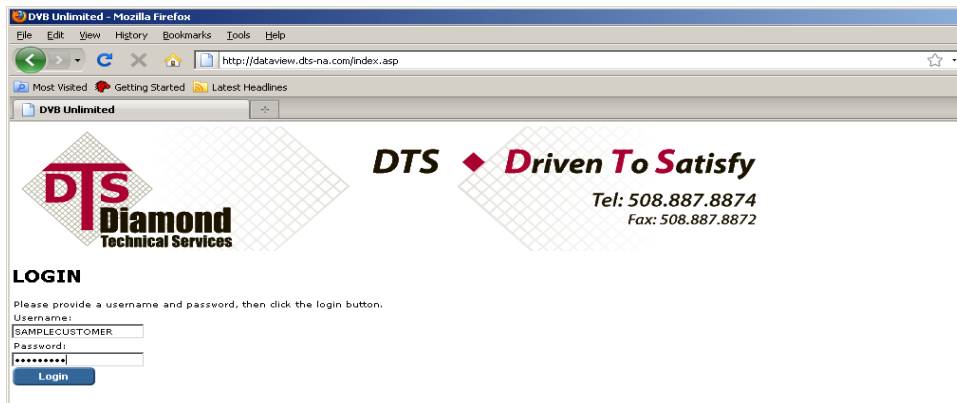


Dataview Quick-Start Guide

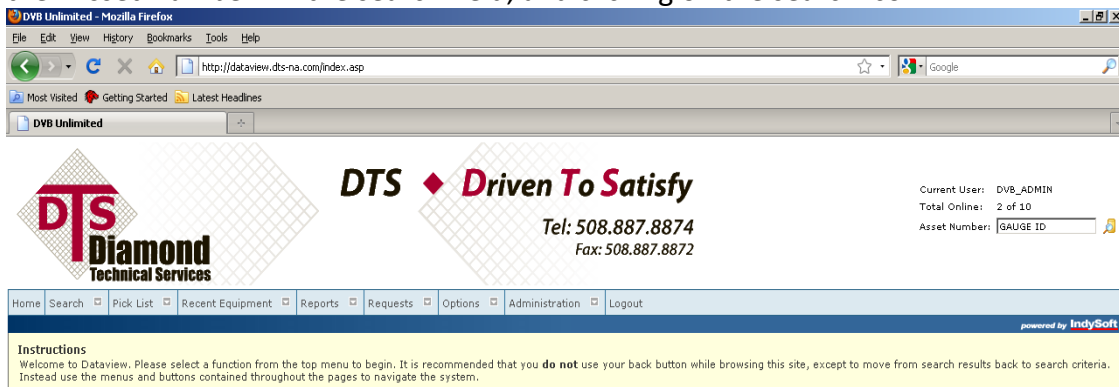
Start by typing: <http://dataview.dts-na.com/> in to the address line on your internet browser.

This will bring up the log in screen for the Dataview browser.

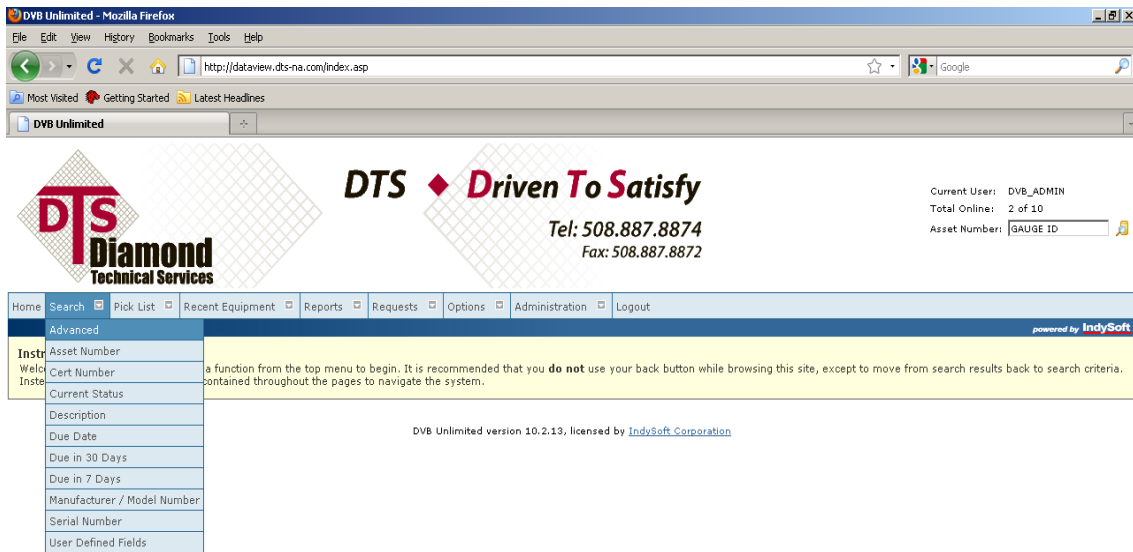
Type in your username and password. Note: the password field is case sensitive.



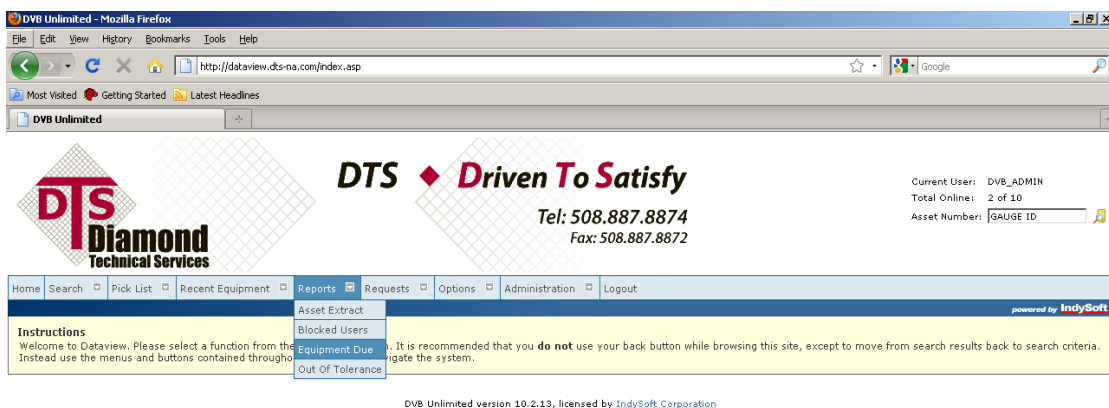
Once you are logged in, it is easy to search for the records of a specific device by typing the “Asset Number” in the search field, and clicking on the search icon.



You can search for devices due for calibration by using the “Advanced” search function in the search drop down menu. The search menu also has other handy search functions like manufacture/model #, serial number and description.



You can easily export a list of your devices to a spreadsheet like MS Excel using CSV formatted text by running the “Equipment Due” report in the Reports menu.



If you have any questions, feel free to call our office at 508-887-8874 x202 or email Lisa Trepanier at ltrepanier@dts-na.com